

Anti-CD22 hIgG4 Reference Antibody (Inobio)

Product Information

Product Name	Anti-CD22 hIgG4 Reference Antibody (Inobio)
Storage temp.	Store at 2-8°C short term (1-2 weeks).Store at $\leq -20^{\circ}\text{C}$ long term. Avoid repeated freeze-thaw.
Catalog# / Size	GM-87699MAB-1mg / 1 mg GM-87699MAB-5mg / 5 mg GM-87699MAB-25mg / 25 mg GM-87699MAB-50mg / 50 mg GM-87699MAB-100mg / 100 mg

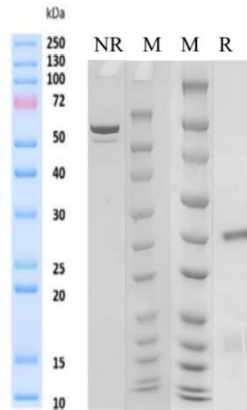
Antibody Information

Expression System	CHO
Aggregation	< 5% as determined by SEC-HPLC
Purity	> 95% as determined by SDS-PAGE
Endotoxin	< 1 EU/mg, determined by LAL gel clotting assay
Sterility	0.2 μm Filtered
Target	CD22
Clone	Inotuzumab
Alternative Names	SIGLEC-2, SIGLEC2
Source/Isotype	Human IgG4 (S228P), Kappa
Application	/
Description	CD22, or cluster of differentiation-22, is a molecule belonging to the SIGLEC family of lectins. It is found on the surface of mature B cells and to a lesser extent on some immature B cells. Generally speaking, CD22 is a regulatory molecule that prevents the overactivation of the immune system and the development of autoimmune diseases. CD22 is a sugar binding transmembrane protein, which specifically binds sialic acid with an immunoglobulin (Ig) domain located at its N-terminus. The presence of Ig domains makes CD22 a member of the immunoglobulin superfamily. CD22 functions as an inhibitory receptor for B cell receptor (BCR) signaling. It is also involved in the B cell trafficking to Peyer's patches in mice. In mice, it has been shown that CD22 blockade restores homeostatic microglial phagocytosis in aging brains
Formulation	phosphate-buffered solution, pH 7.4.

Version:3.1

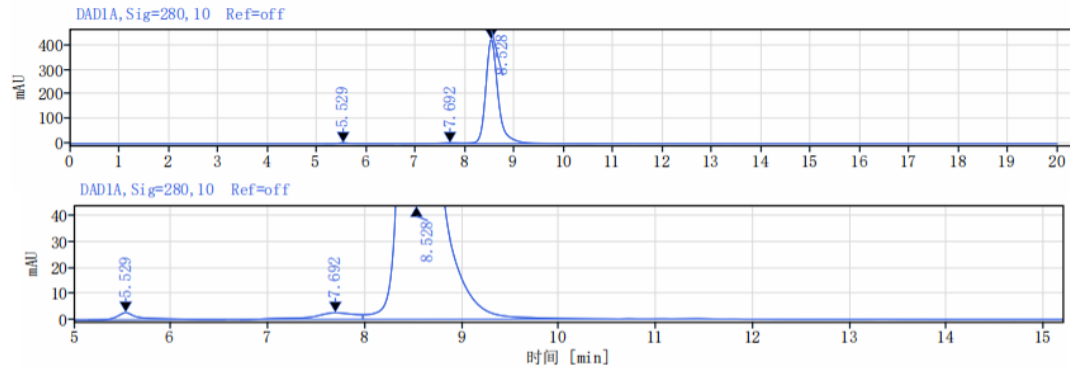
Data Examples

SDS-PAGE



On SDS-PAGE under reducing (R)/non-reducing(N-R) condition. The gel was stained overnight with Coomassie Blue. The purity of the protein is greater than 95%.

SEC-HPLC



The purity of this product is more than 95% verified by SEC-HPLC